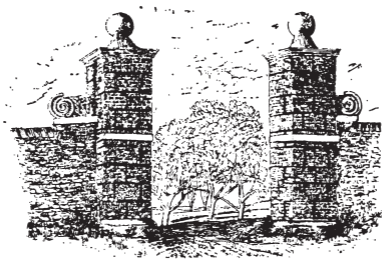


Canterbury Hockey Club



2017-2018



Canterbury Hockey Club

FOUNDED 1901

LIST OF FIXTURES SEASON 2017/2018

117th Season

A Founder Member of Polo Farm Sports Club

President

John Maylam

Chairman

Lee Hare, 07802 467933

Vice Chairman

Jim Laslett, 01227 832641

Secretary

Nick Buckingham, 07756 337770
npbuckingham@gmail.com

Vice-Presidents

A.J. Bloxham	PH. Hamilton	Mrs. J. Robins
R.J. Bones	J. Harris	A.T. Skelton
P.E. Bradley	J.V. Hickling	P. Sorenson
K. Browne	R.H. Hummel	R.D.E. Spencer
P. Buckingham	N. Jones	D. Stevens
D. Bunyan	S. Kerly MBE	J.T. Stickells
D.A.R. Denne	A.B.I. Kearney	M.C. Taylor
N. Durban	M.D. Laslett	T.L. Townsend
K.A. Forbes	G.J. Laslett	N. Webber
D. Garrett	W.L. Laslett	H.F. Welch
D.J. Greaves	R.S. McCarthy	A.G. Westlake
P.B. Griffith	D.J. Pentin	J.S. Whitehead
D.J. Hacker	G. Preston	D.G. White
T.D.O. Hall	A. Pryce	

Life Members

T.D. Ashenden, M.A. Batchelor, G.D. Brown,
G.J. Carter, R.A. Goodenough, J.C. Hinchliff,
R.J. Laslett MBE, M.G. Macdonald, J.C. Maylam,
R.I. Megan J.P., M.J. Twyman

1st XI

Captain

Coach

Matt Burton-Bowen 07814 225723 Craig Boyne 07841 576133

Manager

Assistant Coach

Gary Wyver 07777 645660

David Bunyan 07894 692138

2nd XI

Captain

Coach

Andrew Dunn 07749 304898

Chris Laslett 07926 288924

Pilgrims XI

Captain

Vice Captain

Tom Laslett 07805 406492

TBC

3rd XI

Captain

Vice Captain

Matt Lea 07738 438364

TBC

4th XI

Captain

Vice Captain

Tom Wacher 07738 096472

TBC

Millers XI

Captain

Vice Captain

Paul Sharratt 07734 189894

Neil Barnes 07796 090706

5th XI

Captain

Vice Captain

George Badham 07882 593062

Jon Wild 07878 373577

Griffins XI

Captain

Vice Captain

Tony Panayides 07734 087669

TBC

Squires XI

Captain

Vice Captain

Adam Watkins 07738 697757

TBC

Friars XI

Captain

Vice Captain

Tony Jones 07808 934482

Brian Hurlow 07545 378521

Treasurer

Mark Batchelor

01304 364406 (h) 01304 620600 (w)
2 Thanet View, Ripple, Kent CT14 8HX

Fixture Secretary

Graham Vaughan

01227 761822 (h) 07850 709482 (m)
graham.vaughan@btinternet.com

Club Captain

Matt Lea 07738 438364
matt.lea@hotmail.co.uk

Publicity Officer

Michael Farrer 07917 422940

Junior Hockey Contact

Matt Lea 07738 438364

Bar Representative

Kevin Goulden 07940 914024

Committee Members

C. Laslett, R. J. Laslett, R.S. Dunn, G. Brown,
G. Hayward

Club Kit

Adidas MiTeam Kit available from the club shop
White shirts, dark green Shorts & green Socks

Clubhouse

Polo Farm Sports Club
Littlebourne Road, Canterbury, Kent CT3 4AF
Telephone: 01227 769159

Visit our Website: www.polofarm.org/chc

Club Training

Wednesday Evenings - AW1 6.30pm to 8.00pm

Home Ground

Polo Farm, Littlebourne Road, Canterbury
*Directions: 2½ miles out of Canterbury
on the A257 (Canterbury to Sandwich road)*

Subscriptions

Members are reminded that subscriptions are required to be paid by 1st October and it will materially assist the Club if all members will comply with this Rule.

N.B. See Subscriptions & Match Fees rates

All Weather Pitches at Polo Farm

AW1 (*Clubhouse water-based*),
AW2 (*Lower water-based*) AW3 (*Sand-dressed*)

Times indicated against each fixture are match start times.

Members Please Note - in inclement weather it is your responsibility to enquire about cancellations.



St Edmund's School Canterbury

Pre-Prep | Junior | Senior | Sixth Form

Be all you can be

An independent day and boarding school
for girls and boys aged 3-18, including
the Choristers of Canterbury Cathedral.

St Thomas Hill, Canterbury CT2 8HU

01227 475601

www.stedmunds.org.uk

Team Sponsors

2nd XI



The Chaucer
Hospital

4th XI



In the Garden of England

CHARTHAM
VINEYARD

Griffins

Batchelor Coop

Chartered Accountants & Registered Auditors

Squires

Kent
Hospitality

Friars

Robins
1930  www.robinspkg.co.uk
PACKAGING

1st XI		National Premier Division			
Sept	9	Old Georgians	H	AW1	16.00
	16	Wimbledon	H	AW1	18.00
	23	Surbiton	H	AW1	18.00
Oct	1	Reading	A		14.30
	8	Brookland	H	AW1	12.45
	15	Hampstead & Westminster	A		14.00
	21	East Grinstead	A		18.00
	28	Sevenoaks	H	AW1	17.00
Nov	4	Holcombe	H	AW1	18.00
	11	Wimbledon	H	AW1	18.00
	19	Beeston	H	AW1	13.00
	25	Sevenoaks	A		17.00
Dec	9				
	16				
	23				
	30	<i>Villages Tournament</i>			
Jan	6				
	13				
	20				
	27				
Feb	4	Reading	H	AW1	12.45
	11	Surbiton	A		14.00
	18	Wimbledon	A		
	25	Beeston	A		14.00
Mar	03	East Grinstead	H	AW1	18.00
	11	Brooklands	A		14.00
	17	Holcombe	A		18.00
	25	Hampstead & Westminster	H	AW1	14.00
	31	<i>Easter</i>			

2nd XI		Higgins London League Premier Division			
Sept	9	Burnt Ash (Bexley) 1	H	AW1	12.00
	16	Spencer 2	H	AW1	13.15
	23	Wimbledon 2	A		12.00
	30	East Grinstead 2	H	AW1	13.15
Oct	7	St. Albans 2	A		12.15
	14	Bromley & Beckenham 2	H	AW1	12.00
	21	Richmond 2	A		12.30
	28	Surbiton 2	H	AW1	13.15
Nov	4	Reading 2	A		13.00
	11	Southgate 2	H	AW2	14.30
	18	Teddington 2	H	AW2	12.45
	25	Hampstead & Westminster 2	A		15.00
Dec	2	Spencer 2	A		13.30
	9				
	16				
	23				
	30	<i>Villages Tournament</i>			
Jan	6	Canterbury Pilgrims	H	AW2	14.30
	13	Wimbledon 2	H	AW1	13.15
	20	East Grinstead 2	A		13.30
	27	St. Albans 2	H	AW1	13.15
Feb	3	Bromley & Beckenham 2	A		
	10	Richmond 2	H	AW2	12.45
	17	Surbiton 2	A		11.30
	24	Reading 2	H	AW1	15.00
Mar	3	Southgate 2	A		13.30
	10	Teddington 2	A		
	17	Hampstead & Westminster 2	H	AW1	15.00
	24				
	31	<i>Easter</i>			

Pilgrims		Kent / Sussex Division 2		
Sept	16	Folkestone Optimist 2	A	15.30
	23	Burnt Ash (Bexley) 2	H	AW2 14.30
	30	Holcombe 2	H	AW1 15.00
Oct	7	Bexleyheath & Belvedere 1	A	14.00
	14	Marden Russets 1	H	AW2 14.30
	21	Crawley 1	A	12.00
	28	Southwick 1	A	14.00
Nov	4	South Saxons 1	H	AW1 14.00
	11	Ashford (Kent) 1	A	
	18	Kings Alleyns 1	H	AW1 11.30
	25	Old Williamsonsians 1	A	13.30
Dec	2	Folkestone Optimist 2	H	AW1 15.00
	9	Horsham 2	A	13.30
	16			
	23			
	30	<i>Villages Tournament</i>		
Jan	6	Canterbury 2	A	AW2 14.30
	13	Holcombe 2	A	12.00
	20	Bexleyheath & Belvedere 1	H	AW2 14.30
	27	Marden Russets 1	A	
Feb	3	Crawley 1	H	AW1 13.15
	10	Southwick 1	H	AW2 14.30
	17	South Saxons 1	A	13.30
	24	Ashford (Kent) 1	H	AW1 11.30
Mar	3	Kings Alleyns 1	A	13.45
	10	Old Williamsonsians 1	H	AW1 12.00
	17	Folkestone Optimist 2	A	14.00
	24	Horsham 2	H	AW2 14.30
	31	<i>Easter</i>		

3rd XI		Kent Area - Division 1			
Sept	16	Cliftonville 1	A		10.30
	23	Holcombe 2a	A		15.00
	30	Burnt Ash (Bexley) 2	A		
Oct	7	Cliftonville 1	H	AW1	13.15
	14	Herne Bay 1	A		12.00
	21	Old Bordenian 1	H	AW1	15.00
	28	Sevenoaks 3	H	AW2	14.30
Nov	4	New Beccehamian 1	A		
	11	University of Kent 1	H	AW1	11.30
	18	Gillingham Anchorians 1	A		13.30
	25	Blackheath & Elthamians 2	H	AW2	14.30
Dec	2	Holcombe 2a	A		14.00
	9	Maidstone 2	H	AW2	12.45
	16				
	23				
	30	<i>Villages Tournament</i>			
Jan	6	Canterbury 4	H	AW1	15.00
	13	Burnt Ash (Bexley) 2	H	AW2	12.45
	20	Cliftonville 1	A		
	27	Herne Bay 1	H	AW1	15.00
Feb	3	Old Bordenian 2	A		
	10	Sevenoaks 3	A		
	17	New Beccehamian 1	H	AW2	14.30
	24	University of Kent 1	A		14.30
Mar	3	Gillingham Anchorians 1	H	AW1	12.00
	10	Blackheath & Elthamians 2	A		
	17	Holcombe 2a	H	AW1	13.15
	24	Maidstone 2	A		13.45
	31	<i>Easter</i>			

4th XI		Kent Area - Division 2			
Sept	16	Wapping	H	AW2	14.30
	23	Holcombe	H	AW2	12.45
	30	Canterbury Millers	H	AW2	14.15
Oct	7	Ashford (Kent) 2	A		
	14	Bromley and Beckenham 5	H	AW3	13.30
	21	Gore Court 2	A		13.30
	28	Old Williamsonsians 2	H	AW1	15.00
Nov	4	Tunbridge Wells 2	A		14.00
	11	Gore Court 3	A		11.45
	18	Deal 1	H	AW2	14.30
	25	Bexleyheath & Belvedere 2	A		12.30
Dec	2	Blackheath & Elthamians 3	H	AW1	11.30
	9	Holcombe 3	A		13.30
	16				
	23				
	30	<i>Villages Tournament</i>			
Jan	6	Canterbury 3	A	AW1	15.00
	13	Canterbury Millers	A	AW1	16.30
	20	Ashford (Kent) 2	H	AW2	12.45
	27	Bromley & Beckenham 5	A		
Feb	3	Gore Court 2	H	AW1	11.30
	10	Old Williamsonsians 2	A		13.30
	17	Tunbridge Wells 2	H	AW1	16.00
	24	Gore Court 2	H	AW2	14.30
Mar	3	Deal 1	A		11.30
	10	Bexleyheath & Belvedere 2	H	AW2	14.30
	17	Blackheath & Elthamians 3	A		
	24	Holcombe 3	H	AW1	12.00
	31	<i>Easter</i>			

Millers		Kent Area - Division 2		
Sept	16	Folkestone Optimist 3	A	14.00
	23	Herne Bay 3	A	14.30
	30	Canterbury 4	A	AW2 14.15
Oct	7	Deal 1s	H	AW1 15.00
	14	Bexleyheath & Belvedere 2	A	12.30
	21	Blackheath & Elthamians 3	H	AW1 11.30
	28	Holcombe 3	A	13.30
Nov	4	Gore Court 3	H	AW2 14.30
	11	Ashford (Kent) 2	H	AW1 16.30
	18	Bromley & Beckenham 5	A	16.00
	25	Gore Court 2	H	AW2 11.00
Dec	2	Old Williamsons 2	A	13.30
	9	Tunbridge Wells 2	H	AW1 15.00
	16			
	23			
	30	<i>Villages Tournament</i>		
Jan	6	Folkestone Optimist 3	H	AW2 12.45
	13	Canterbury 4	H	AW1 16.30
	20	Deal 1	A	10.00
	27	Bexleyheath & Belvedere 2	H	AW3 12.00
Feb	3	Blackheath & Elthamians 3	A	
	10	Holcombe 3	H	AW1 16.30
	17	Gore Court 3	A	11.45
	24	Ashford (Kent) 2	A	
Mar	3	Bromley & Beckenham 5	H	AW2 12.45
	10	Gore Court 2	A	13.30
	17	Old Williamsons 2	H	AW2 14.30
	24	Tunbridge Wells 2	A	14.00
	31	<i>Easter</i>		

5th XI		KHA - Open Premier B			
Sept	16	Folkestone Optimist 4	H	AW1	11.30
	23	Holcombe 4	A		12.00
	30	Tunbridge Wells 3	H	AW3	15.00
Oct	7	Holcombe 4	A		11.00
	14	Gore Court 4	H	AW3	15.00
	21	Old Bordenian 3	A		
	28	K Sports (Cobdown) HC 1	A		10.00
Nov	4	Burnt Ash (Bexley) 4	H	AW2	12.45
	11	Tunbridge Wells Vets	A		16.00
	18	Sevenoaks 6	H	AW1	16.30
	25	Old Williamsons 3	A		15.00
Dec	2	Blackheath & Elthamians	H	AW2	12.45
	9	Burnt Ash (Bexley) 3	A		
	16				
	23				
	30	<i>Villages Tournament</i>			
Jan	6	K Sports (Cobdown) HC 1	A		12.30
	13	Tunbridge Wells 3	A		14.30
	20	Holcombe 4	H	AW1	15.00
	27	Gore Court 4	A		15.00
Feb	3	Old Bordenian 3	H	AW1	16.30
	10	K Sports (Cobdown) HC 1	H	AW1	15.00
	17	Burnt Ash (Bexley) 4	A		
	24	Tunbridge Wells Vets	H	AW3	13.30
Mar	3	Sevenoaks 6's	A		
	10	Old Williamsons 3	H	AW1	16.00
	17	Blackheath & Elthamians	A		
	24	Burnt Ash (Bexley) 3	H	AW2	12.45
	31	<i>Easter</i>			

Griffins		Kent Open - Premier C			
Sept	16	Folkestone Optimist 5s	H	AW2	12.45
	23	Holcombe 4A	H	AW3	15.00
	30	Sutton Valence 3	A		09.45
Oct	7	Holcombe 4A	H	AW3	15.00
	14	Tunbridge Wells 4 (Monarchs)	A		
	21	Herne Bay 3	H	AW1	16.30
	28	Sevenoaks Acorns	H	AW2	12.45
Nov	4	Deal 2	A		11.00
	11	Cliftonville 2	H	AW1	13.15
	18	Burnt Ash (Bexley) 5	A		
	25	Maidstone 3	H	AW1	16.00
Dec	2	Ashford (Kent) 4	A		
	9	Sevenoaks 7	H	AW2	14.30
	16				
	23				
	30	<i>Villages Tournament</i>			
Jan	6	Folkestone Optimist 5	A		13.00
	13	Sutton Valence 3	H	AW1	15.00
	20	Holcombe 4A	A		11.00
	27	Tunbridge Wells 4 (Monarchs)	H	AW2	14.30
Feb	3	Herne Bay 3	A		11.30
	10	Sevenoaks Acorns	A		13.30
	17	Deal 2	H	AW1	12.00
	24	Cliftonville 2	A		10.30
Mar	3	Burnt Ash (Bexley) 5	H	AW2	14.30
	10	Maidstone 3	A		15.00
	17	Ashford (Kent) 4	H	AW1	16.30
	24	Sevenoaks 7	A		10.30
	31	<i>Easter</i>			

Squires		KHA - Open Division 1			
Sept	16	Folkestone Optimist 6	H	AW1	16.30
	23	Holcombe 5	H	AW3	12.00
	30	Old Williamsonsians 4	A		15.00
Oct	7	Gravesham & Wellcome 2	H	AW1	16.30
	14	Gore Court 5	A		15.00
	21	Bromley and Beckenham 6	H	AW3	13.30
	28	Holcombe 5	H	AW3	15.00
Nov	4	Bexleyheath & Belvedere 3	A		14.00
	11	Folkestone Optimist 5	H	AW2	14.30
	18	Marden Russets 3	A		
	25	Blackheath & Elthamians 5	H	AW2	12.45
Dec	2	Gillingham Anchorians 3	A		15.00
	9	TBC			
	16				
	23				
	30	<i>Villages Tournament</i>			
Jan	6	Folkestone Optimist 6	A		15.30
	13	Marden Russets 3	A		
	20	Gravesham & Wellcome 2	A		14.45
	27	Gore Court 5	H	AW1	11.30
Feb	3	Bromley and Beckenham 6	A		
	10	Holcombe 5	A		13.00
	17	Bexleyheath & Belvedere 3	H	AW2	12.45
	24	Folkestone Optimist 5	A		
Mar	3	Marden Russets 3	H	AW1	14.00
	10	Blackheath & Elthamians 5	A		
	17	Gillingham Anchorians 3	H	AW1	11.30
	24	TBC			
	31	<i>Easter</i>			

Friars		Kent Open Division 3		
Sept	16	Folkestone Optimist 7	A	13.00
	23	Holcombe 5A	A	10.30
	30	Old Bordenian 5	H AW2	16.00
Oct	7	Folkestone Optimist 7	A	16.00
	14	Old Bordenian 5	H AW3	12.00
	21	Blackheath & Elthamians	A	14.30
	28	Burnt Ash (Bexley) 6	A	
Nov	4	Maidstone 5	H AW3	15.00
	11	Herne Bay 4	A	14.30
	18	Blackheath & Elthamians	H AW1	15.00
	25	Sevenoaks 8	A	
Dec	2	Holcombe 6	H AW1	16.30
	9	Old Bordenian 5	A	16.00
	27	Tunbridge Wells Grasshoppers	H AW1	12.00
	30	<i>Villages Tournament</i>		
Jan	6	Gore Court 5	H AW1	11.30
	13	TBC		
	20	Folkestone Optimist 7	H AW1	16.30
	27	Old Bordenian 5	A	
Dfeb	3	Blackheath & Elthamians	H AW3	13.30
	10	Burnt Ash (Bexley) 6	H AW3	13.30
	17	Maidstone 5	A	12.00
	24	Herne Bay 4	H AW1	16.30
Mar	3	Blackheath & Elthamians	A	
	10	Sevenoaks 8	H AW3	12.00
	17	Holcombe 6	A	11.30
	24	TBC		
	31	<i>Easter</i>		

SSS Ltd

Specialist Sports Shoes Ltd



OFFICIAL DISTRIBUTOR

Specialist Sports Ltd, adidas Hockey official distributors
are pleased to be the new kit suppliers
for Canterbury Hockey Club

Chavereys

CHARTERED
ACCOUNTANTS

**Speak to Chavereys,
the rural tax-planning specialist**

Contact Nicholas Holmes on 01795 594495
email: nick.holmes@chavereys.co.uk
or visit our website www.chavereys.co.uk



**THE INSURANCE ADVISER
THAT YOU NEED ON YOUR TEAM**

Tel: **01795 597170**

www.capitalandcounty.co.uk

LITHO, DIGITAL & LARGE FORMAT PRINTERS

The logo for Mickleprint features a stylized, three-wavy 'M' symbol above the word 'mickleprint' in a bold, lowercase sans-serif font. Below this, the words '(CANTERBURY) LIMITED' are written in a smaller, all-caps sans-serif font.

mickleprint
(CANTERBURY) LIMITED

**For All Your Business & Personal Stationery
Clothing, T-shirt Printing & Embroidery
Banners, Signage & Vehicle Graphics**

SIMMONDS ROAD, WINCHEAP ESTATE, CANTERBURY, CT1 3RA

01227 780001 • www.mickleprint.com

Subscriptions (Rule 7)

Playing Members Annual Subscriptions:
(Inclusive of Polo Farm Sports Club Subscription)

21 or over	£150.00*
Under 21	£100.00

Members joining late in the season may be charged a reduced subscription at the discretion of the Executive Committee.

Subscriptions are due from the start of the season - any member failing to pay by October 31st may not be eligible to play for any CHC team until such time as his subscription is paid. Should the subscription remain unpaid a member will be liable to lose the privilege of Membership.

Annual Subscriptions may be paid via the website, for your convenience.

Match Fees (Rule 8)

21 and over	£15.00
Under 21/Student	£5.00

Dates for your Diary 2017 - 2018

November 19	Presidents Day
December 26	Laslett XI Hockey Match
December 30	Annual Villages Tournament
TBC	Peter Robins Tournament